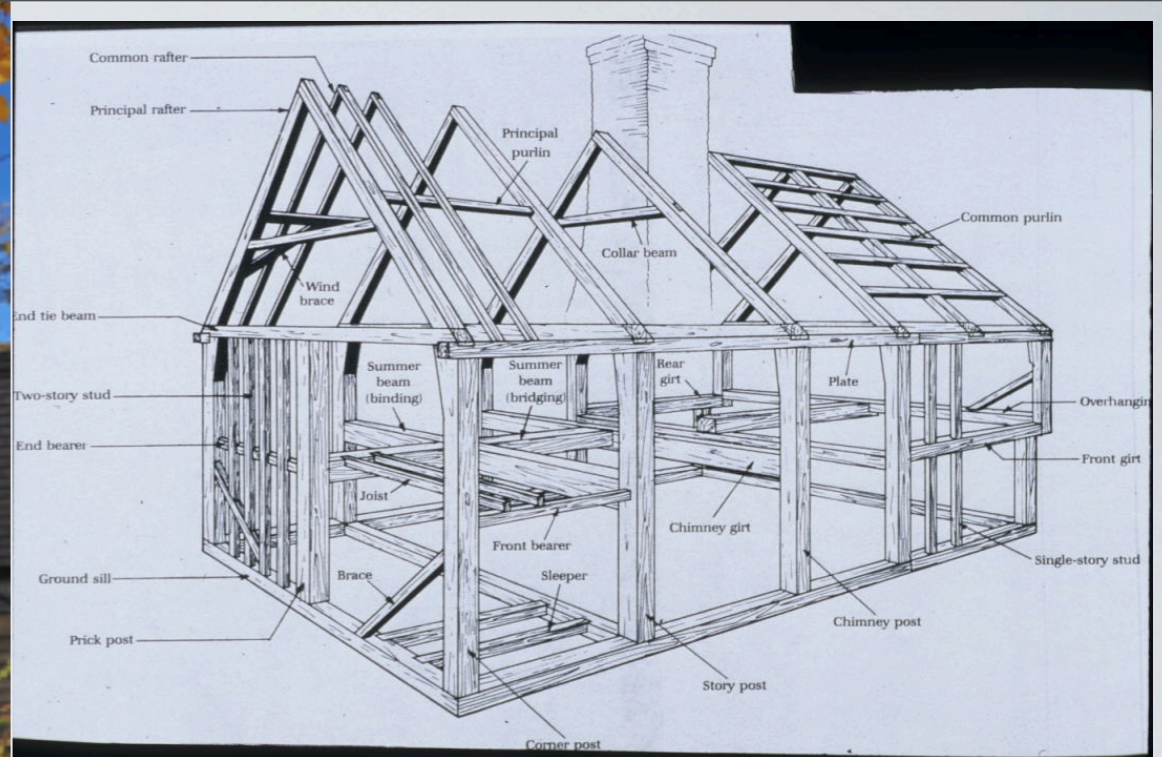


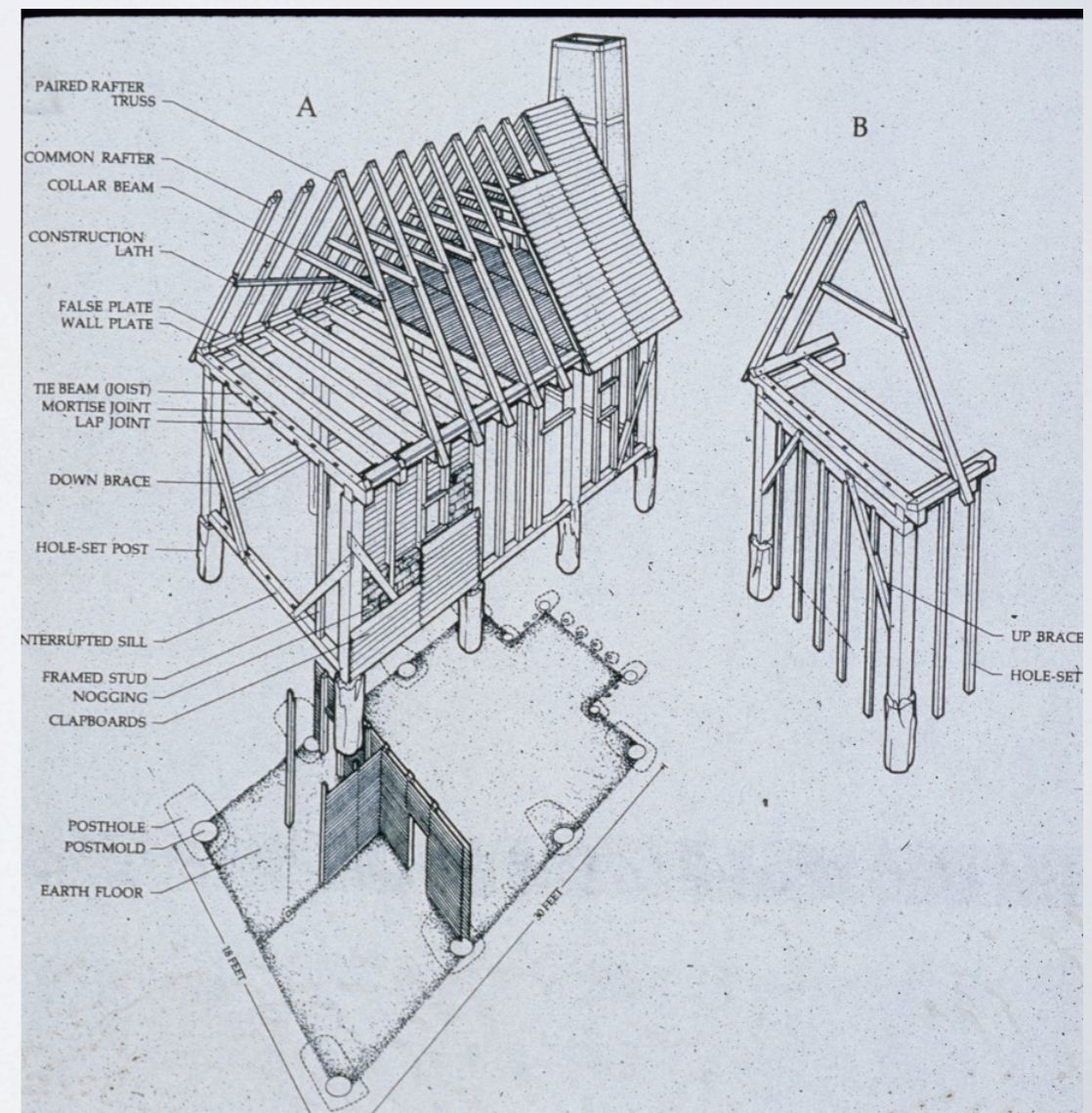
The Purpose and Effects of Style

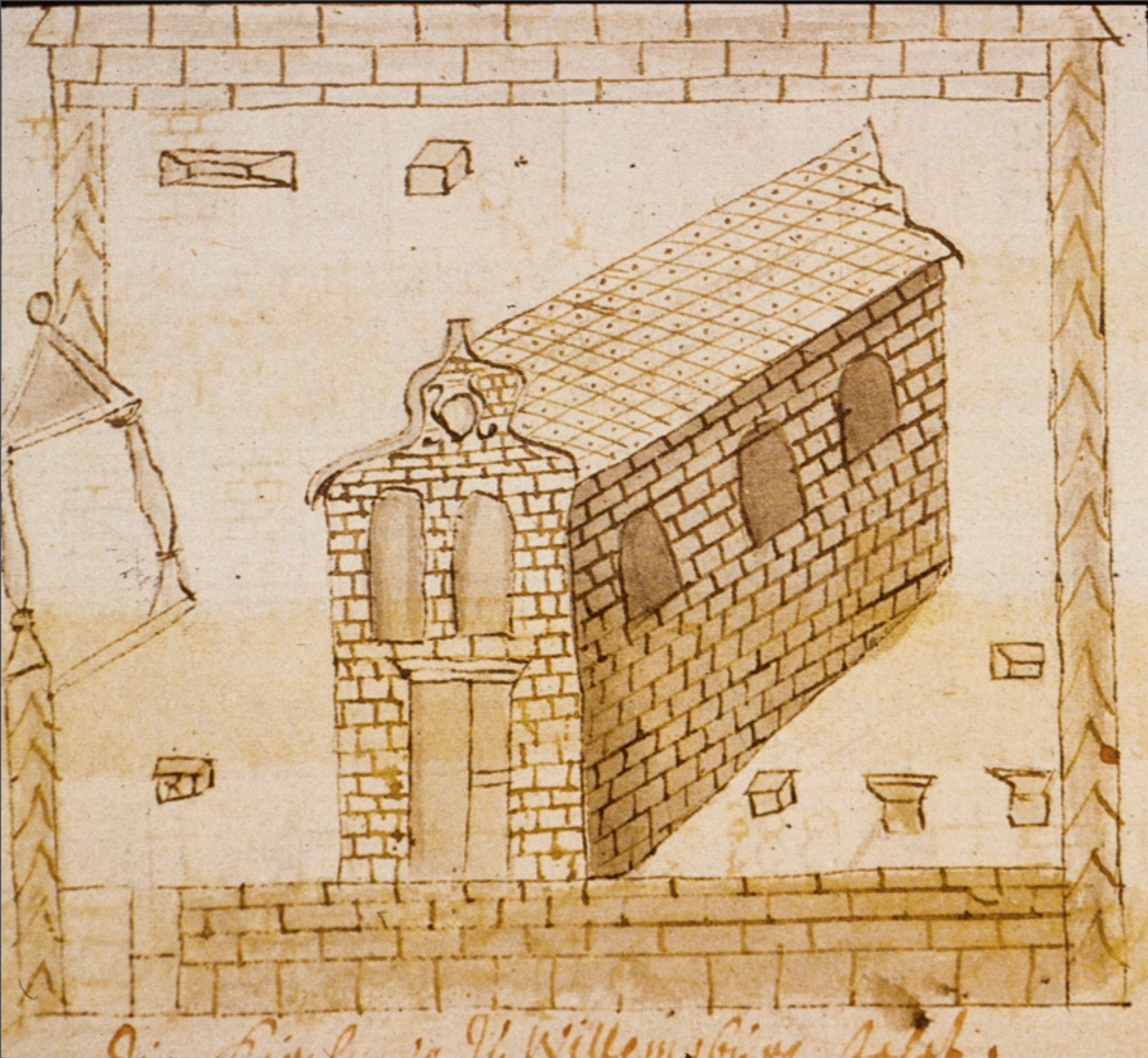
Anglo Palladianism





English Vernacular Traditions





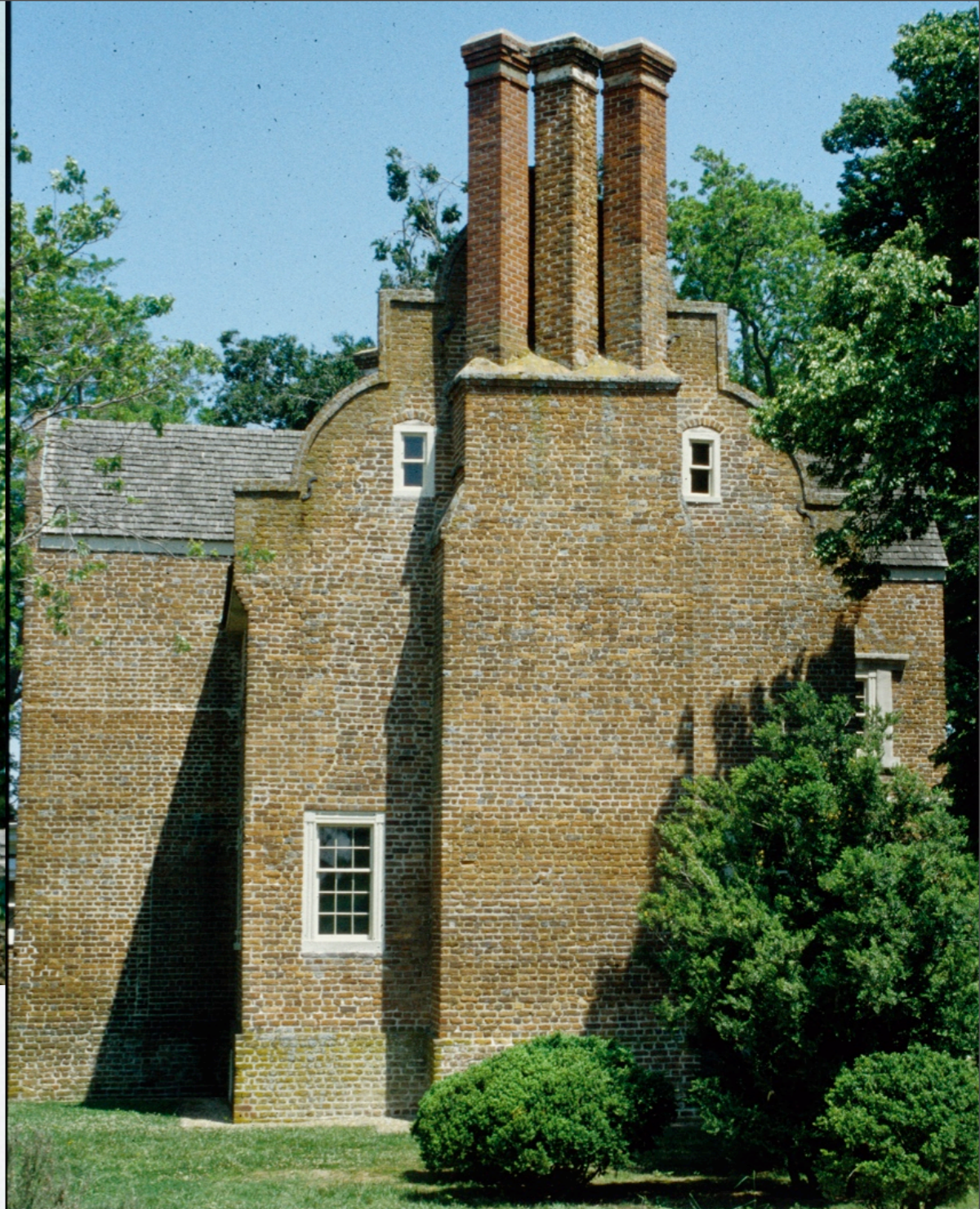
**Above:
Bruton Parish Church, 1680,
Williamsburg, VA**

**Above and Right:
St. Luke's, 1682, Isle of Wight, VA**

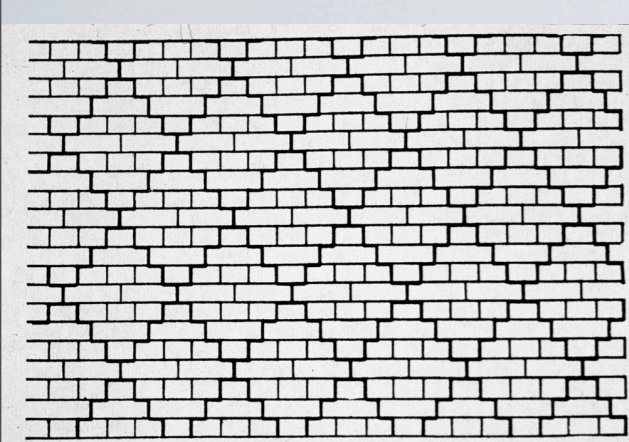


Bacon's Castle, 1655, Surrey Co., Va





Artisan Mannerism and the Dutch Connection



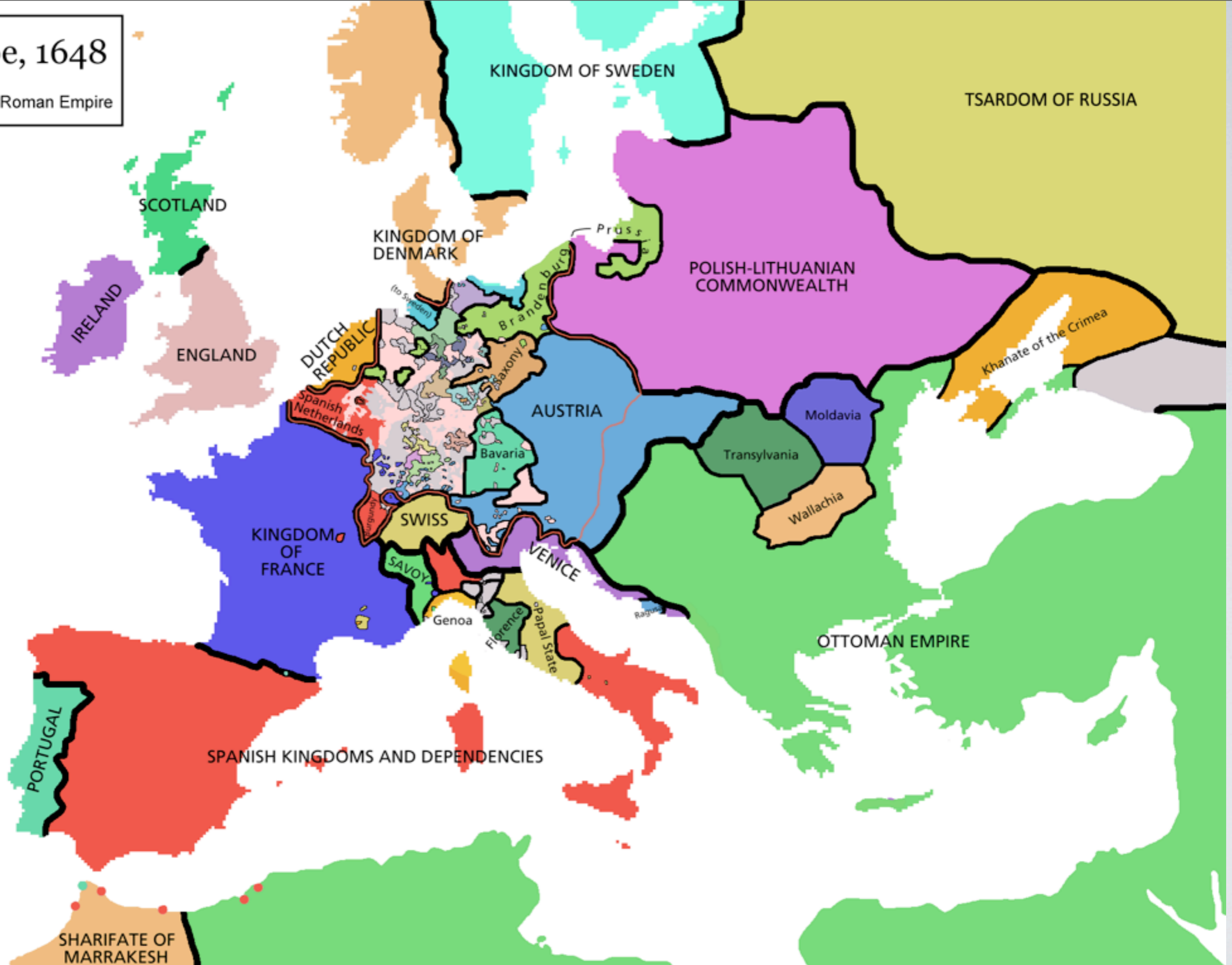
DUTCH CROSS BOND

77. Dutch-cross-bond brickwork (Philip White)



Europe, 1648

— Holy Roman Empire



Fairfield, 1692, Gloucester Co, Va.

**Transition from Artisan Mannerism
to Anglo Dutch Palladianism.**

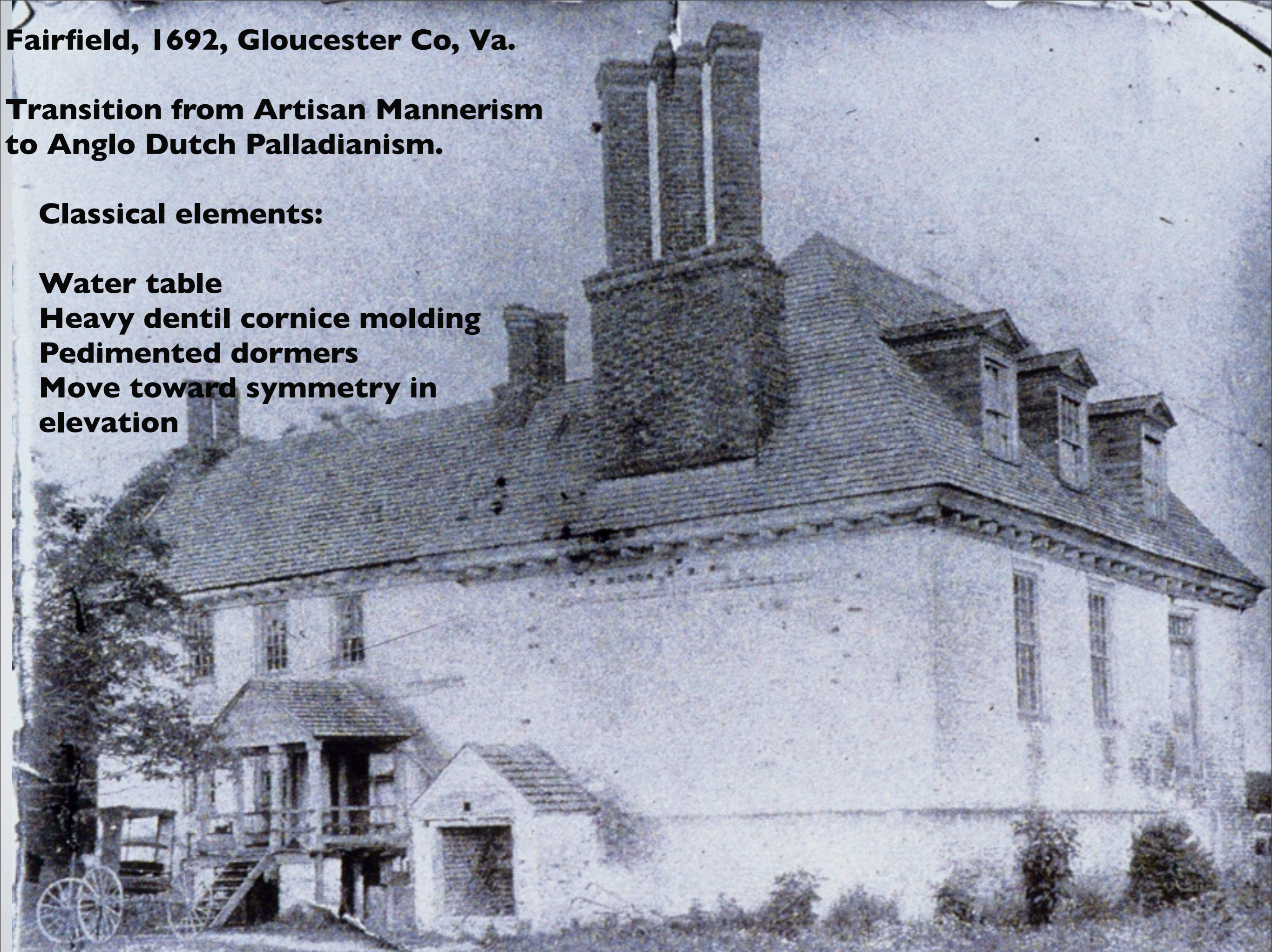
Classical elements:

Water table

Heavy dentil cornice molding

Pedimented dormers

**Move toward symmetry in
elevation**



Anglo Dutch Palladianism: The Dutch Connection

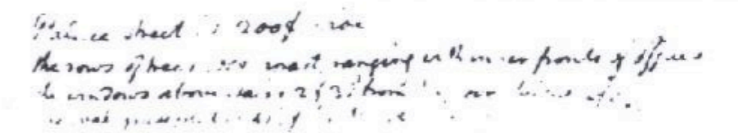
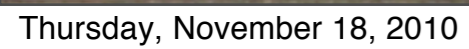


Mauritshuis, 1633, The Hague, Netherlands
Anglo Dutch Palladianism

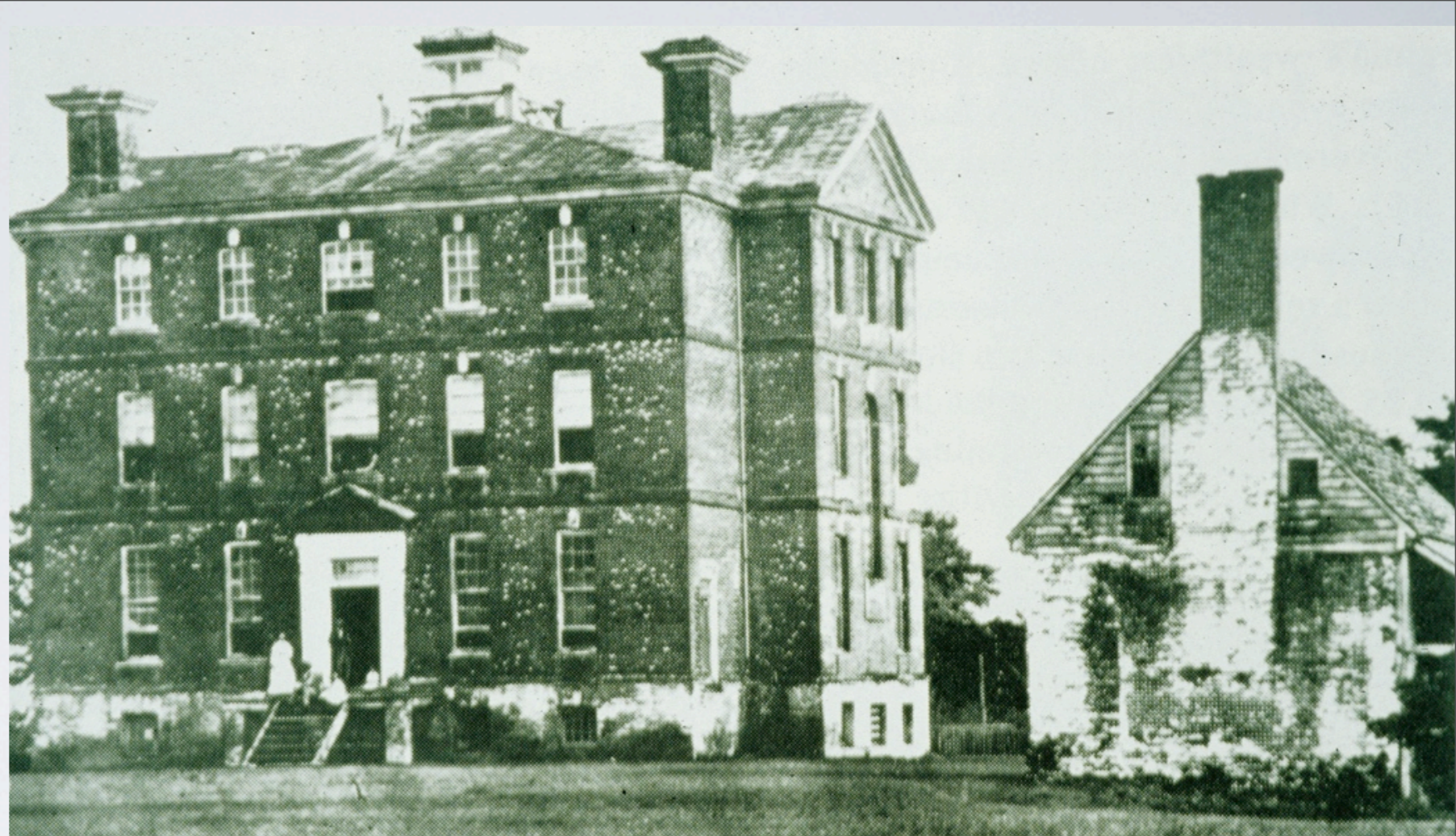


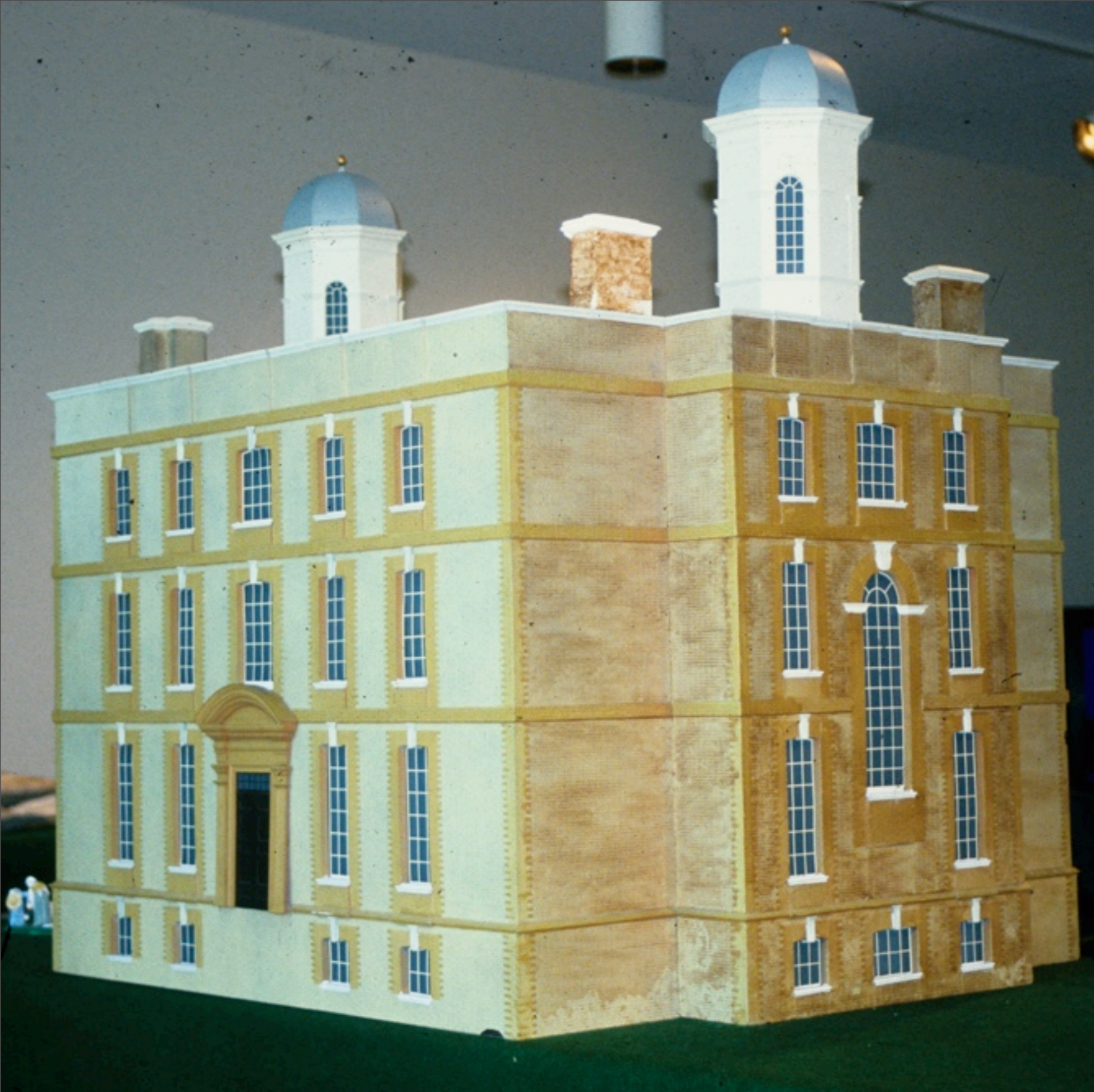
Wellford House, 1660, Sussex, England

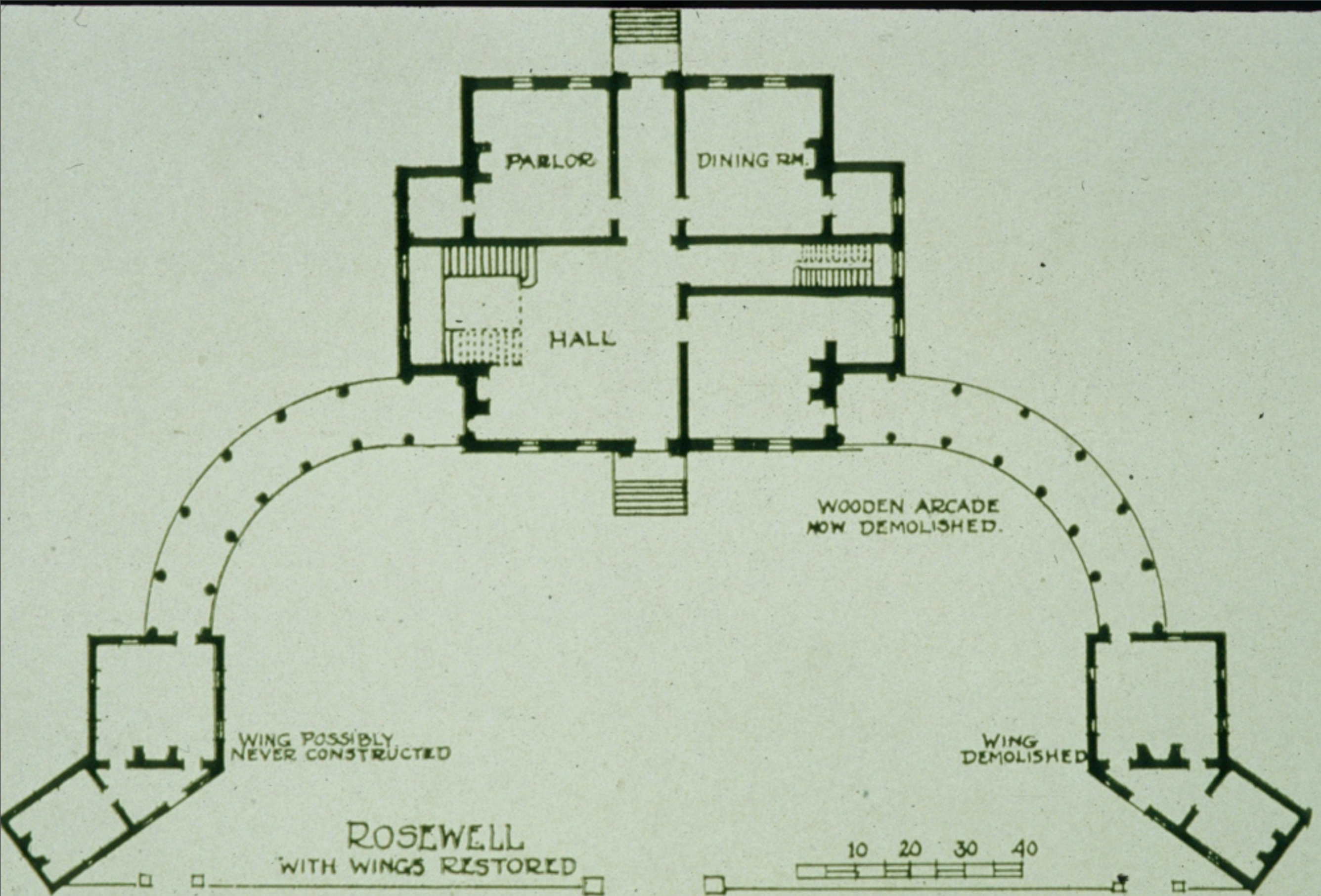




Rosewell, 1725
Gloucester Co, Va







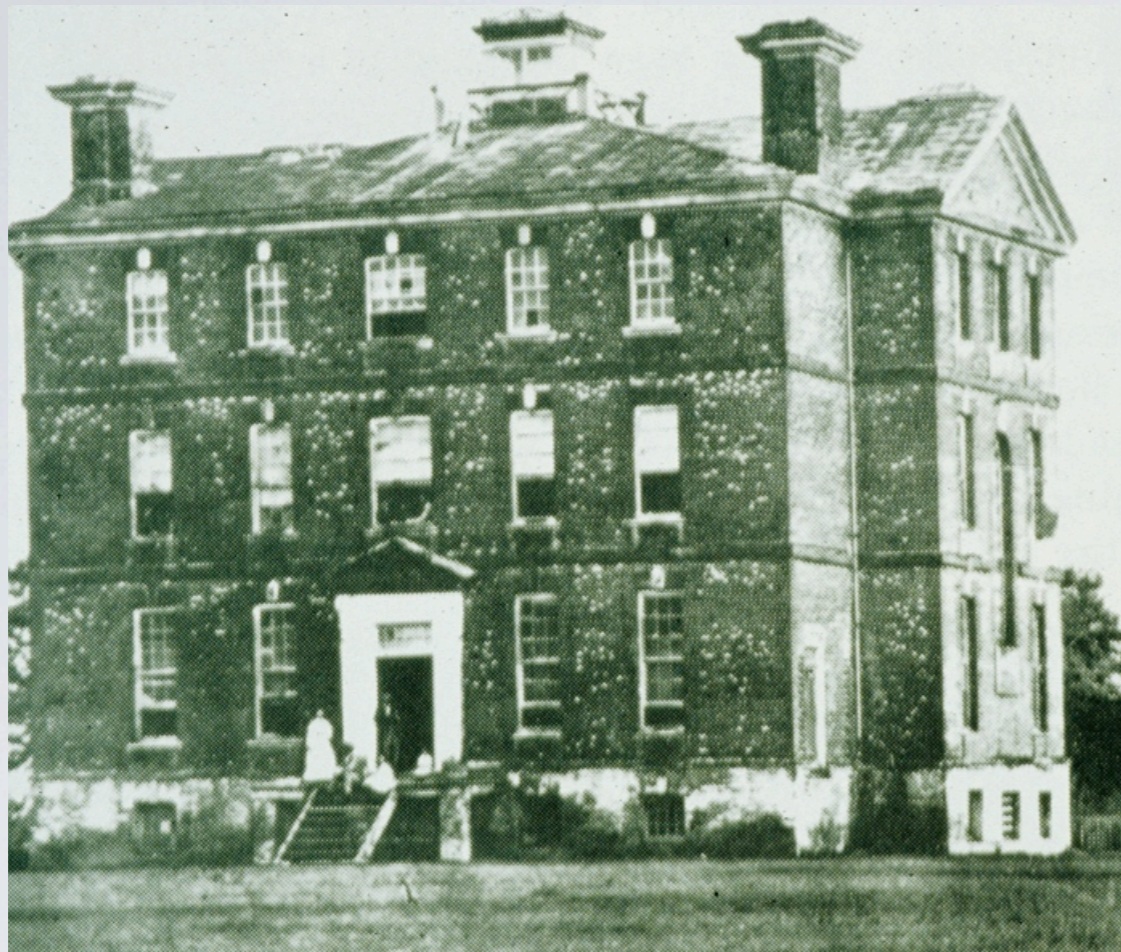
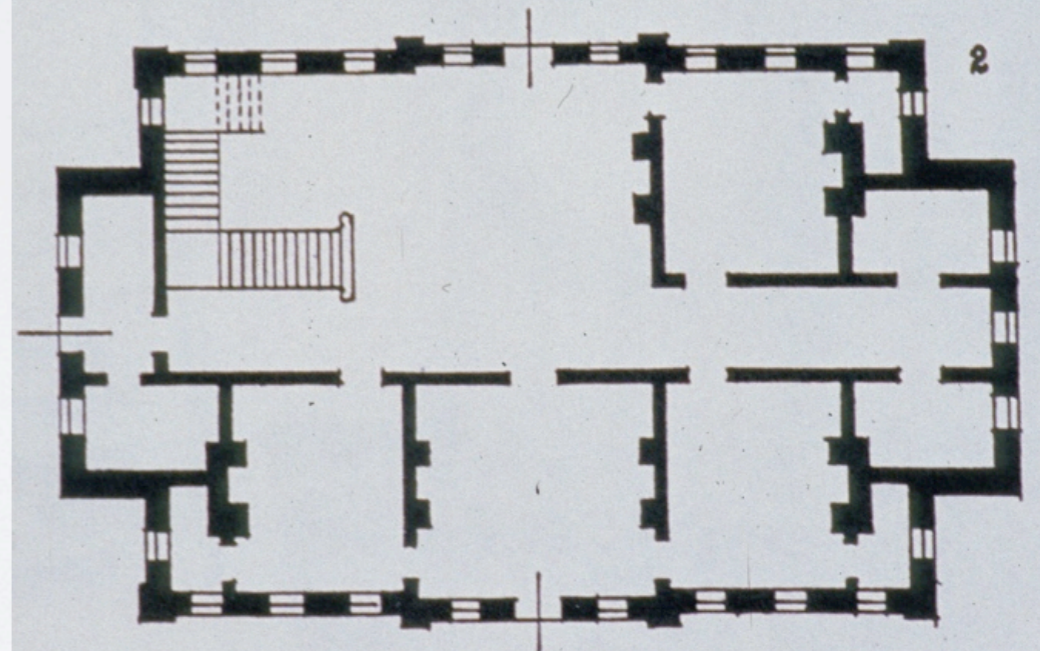
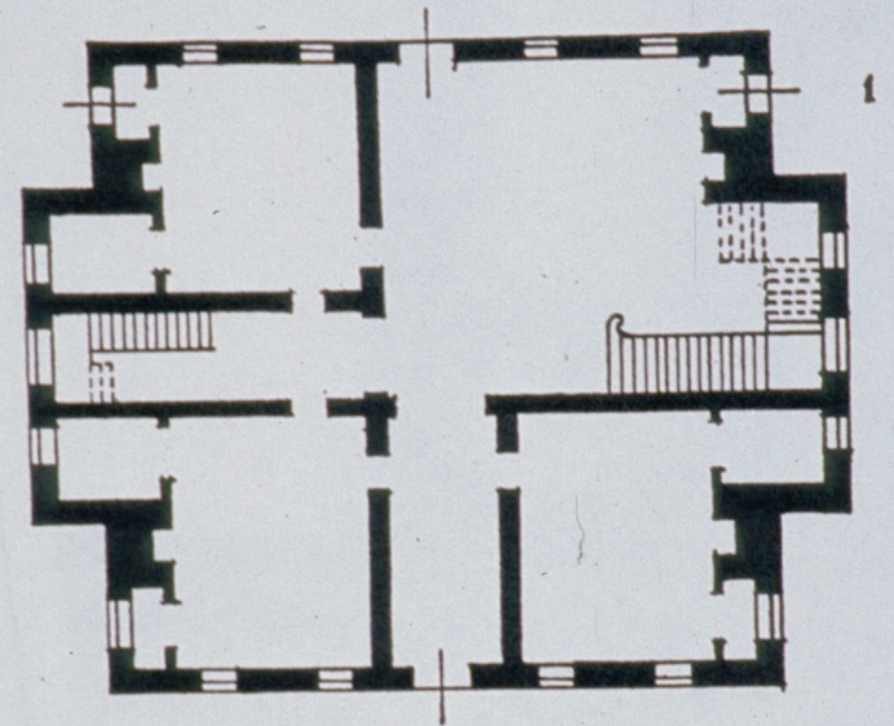
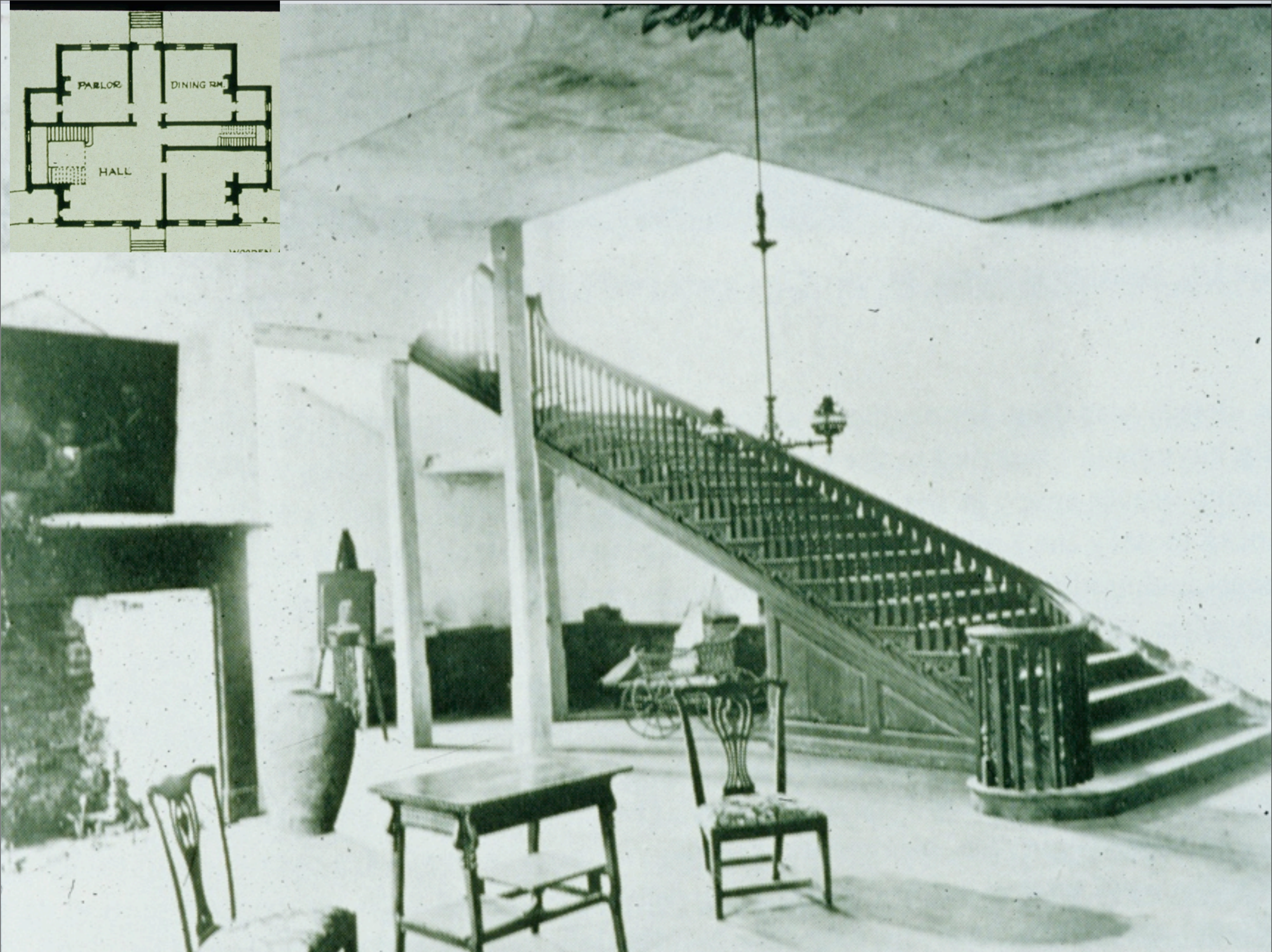
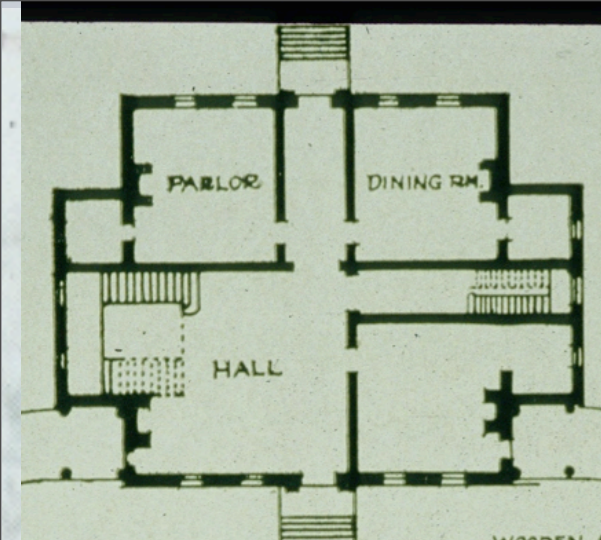


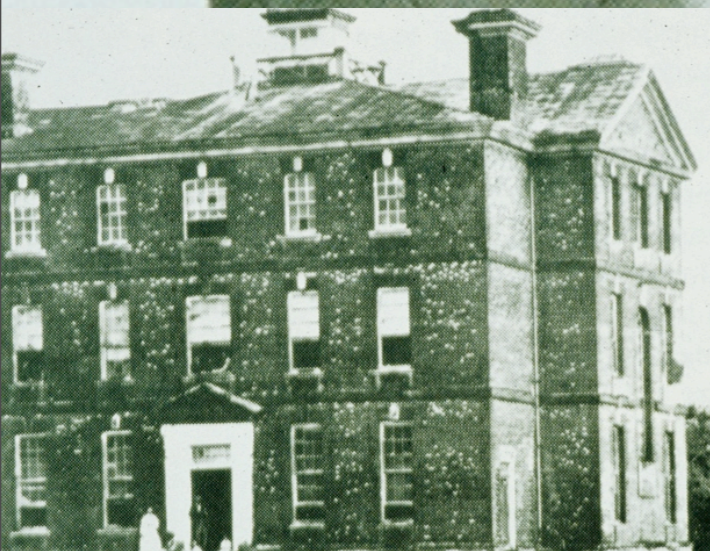
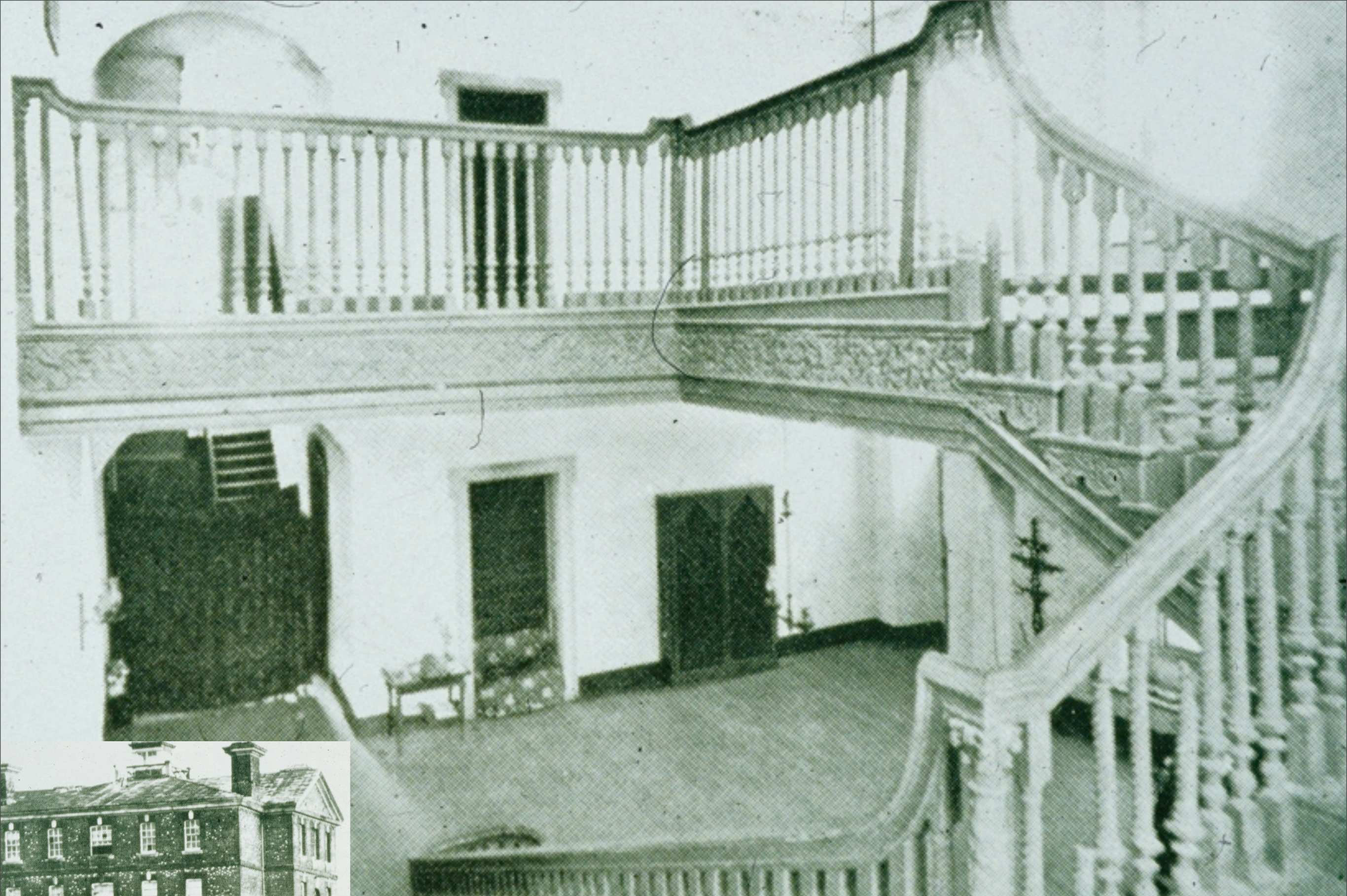
PLATE I



0 5' 10' 15' 20'

1. Rosewell (1720-30), Gloucester County, Virginia.
(Shown without dependencies.)
2. Count Hall (1703), Shropshire, England.
(Before the alterations.)

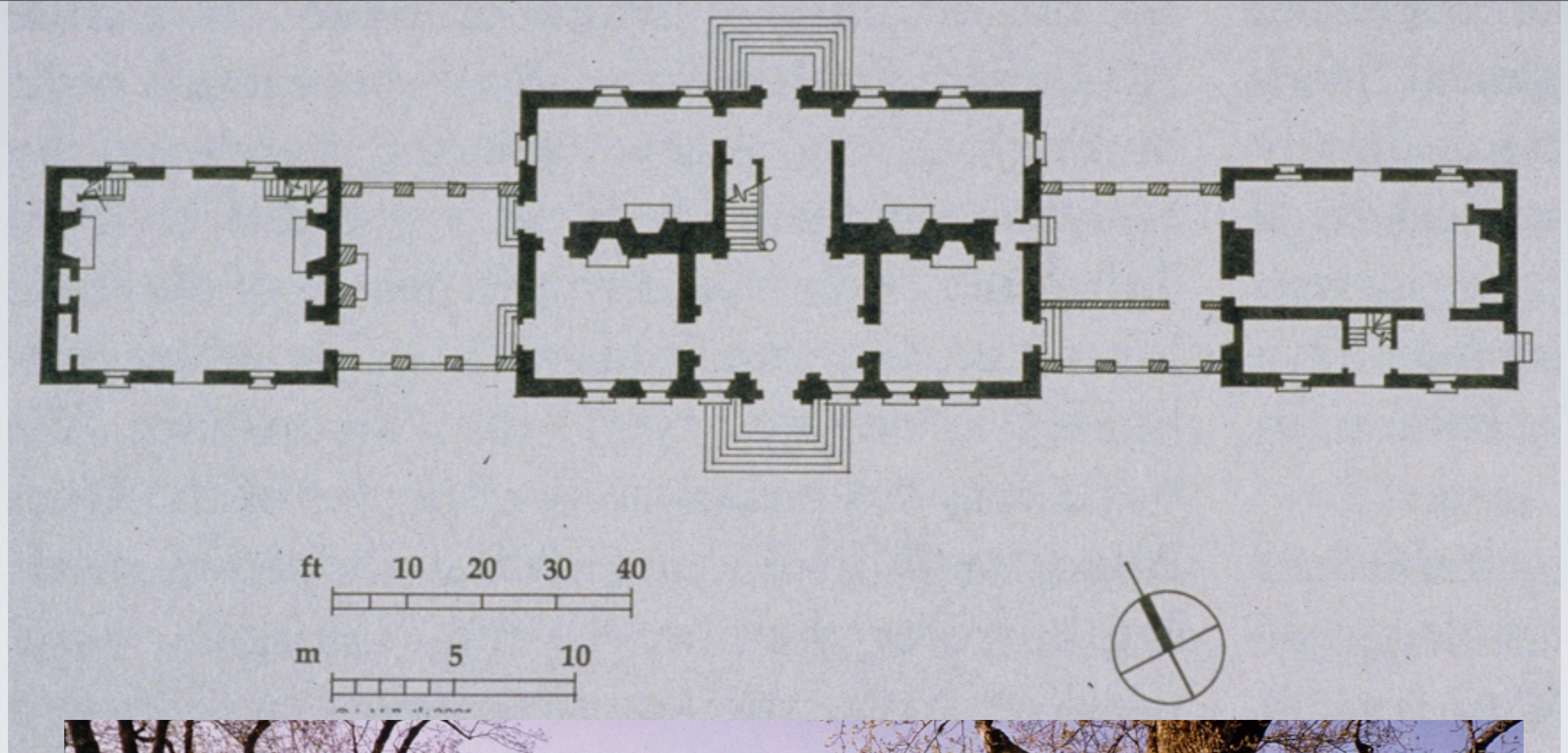






**Carter's Grove, 1750,
Williamsburg, Va**







Westover, 1750, Charles City, Va

Artisan Mannerism and Anglo-Dutch Palladianism

Both results of Mercantile Capitalism and Corporate Colonialism



The Purpose and Effects of Style

Anglo Palladianism





Andrea Palladio
The Four Books of Architecture
1570

Colen Campbell
Vitruvius Britannicus
1715

James Gibbs
A Book of Architecture
1728



Wythe House, 1755, Williamsburg, Va. “Georgian Style”



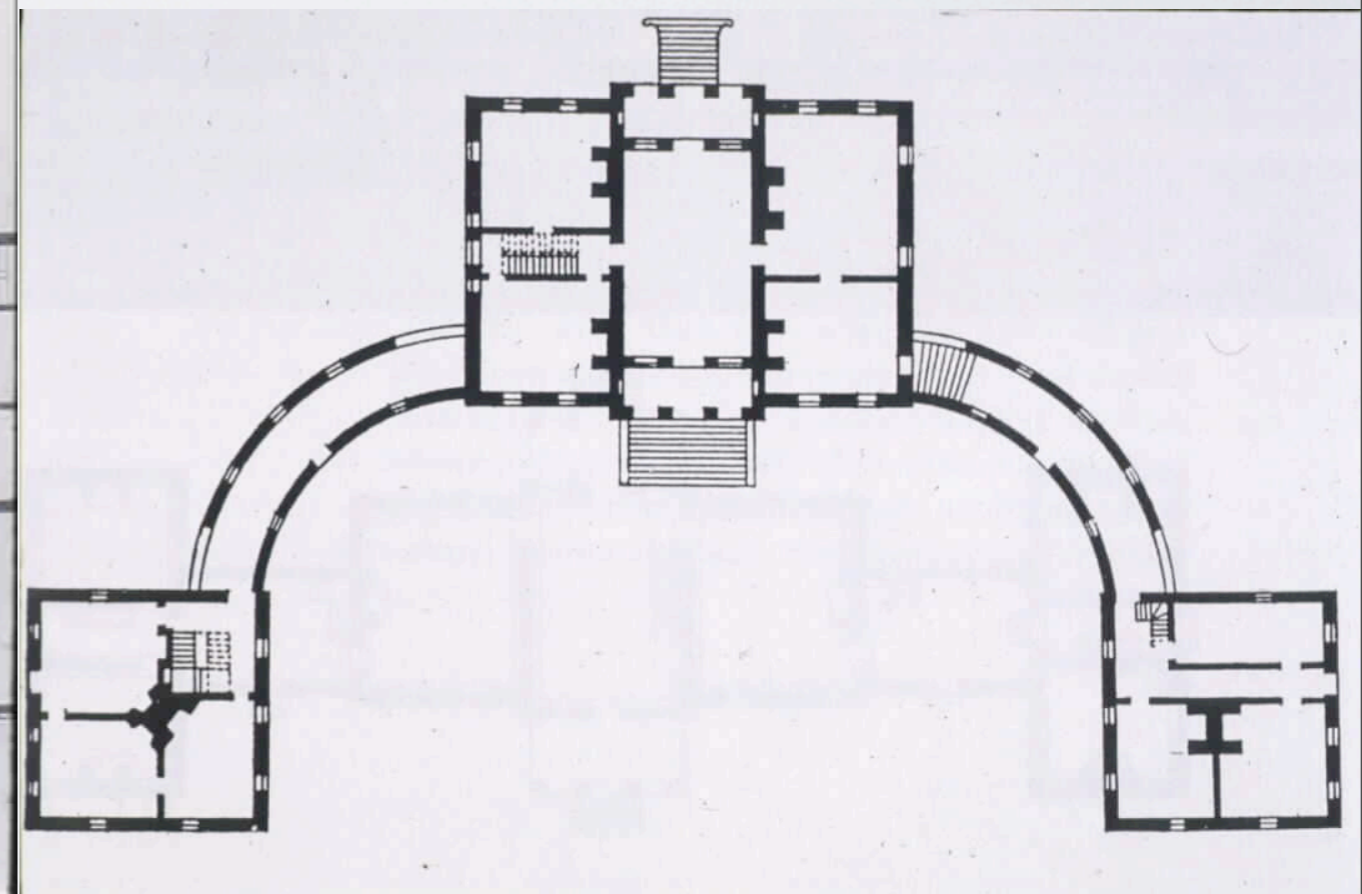
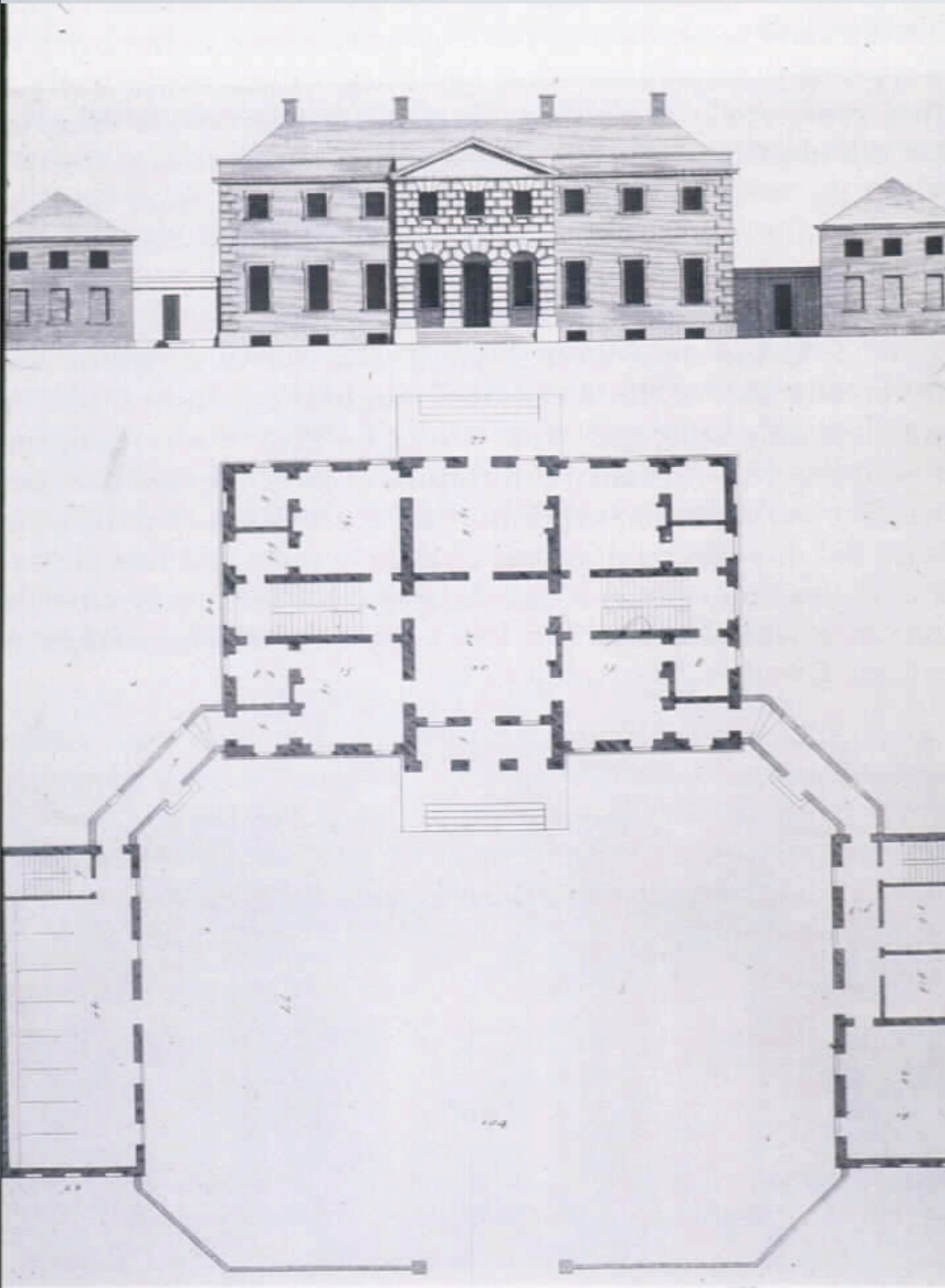
**Mount Airy
Richmond Co., Va
1755**

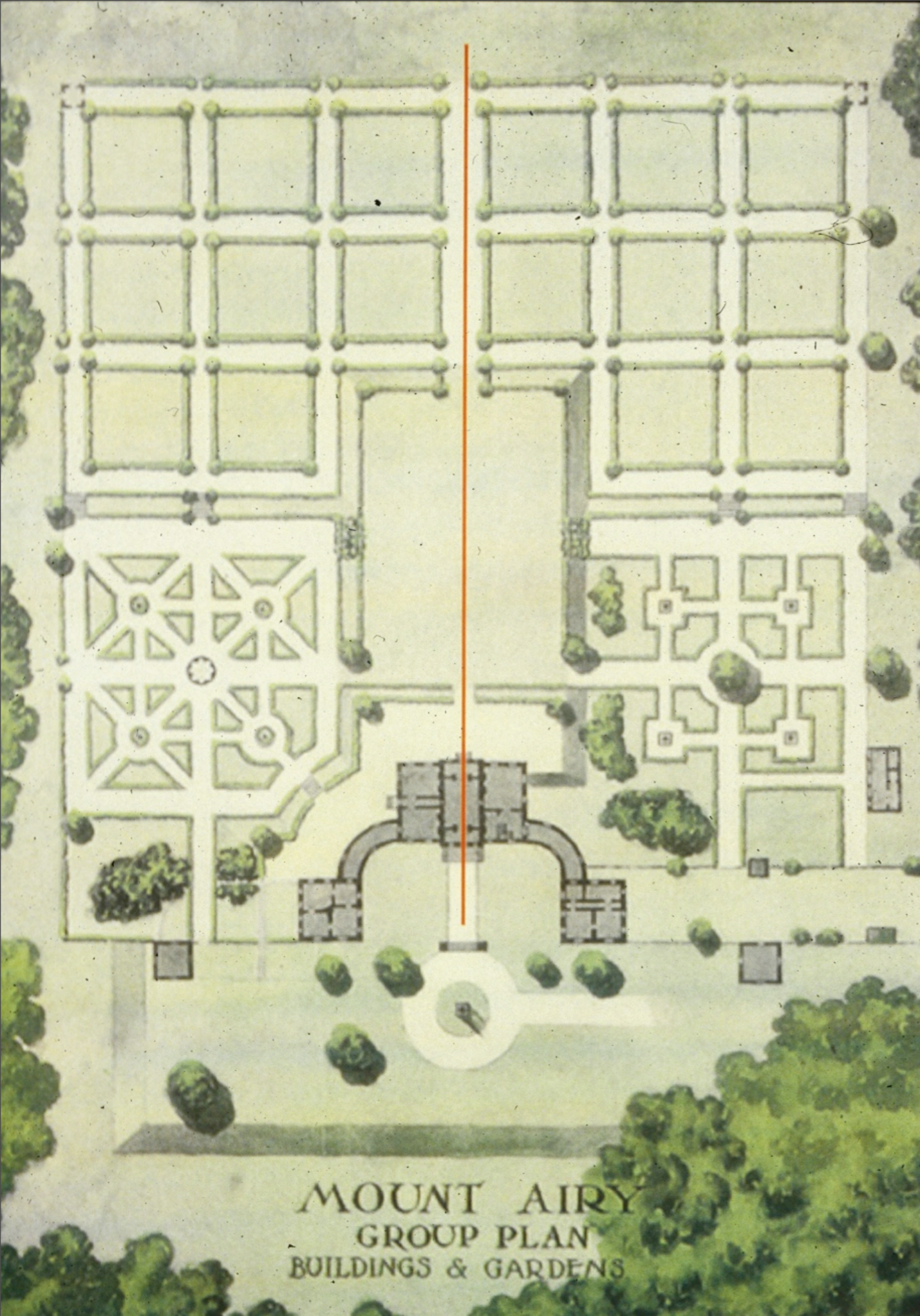
**John Arris, master builder
William Buckland, master
carpenter**

**Note symmetry and nearly
identical elevations of
forecourt and garden sides**

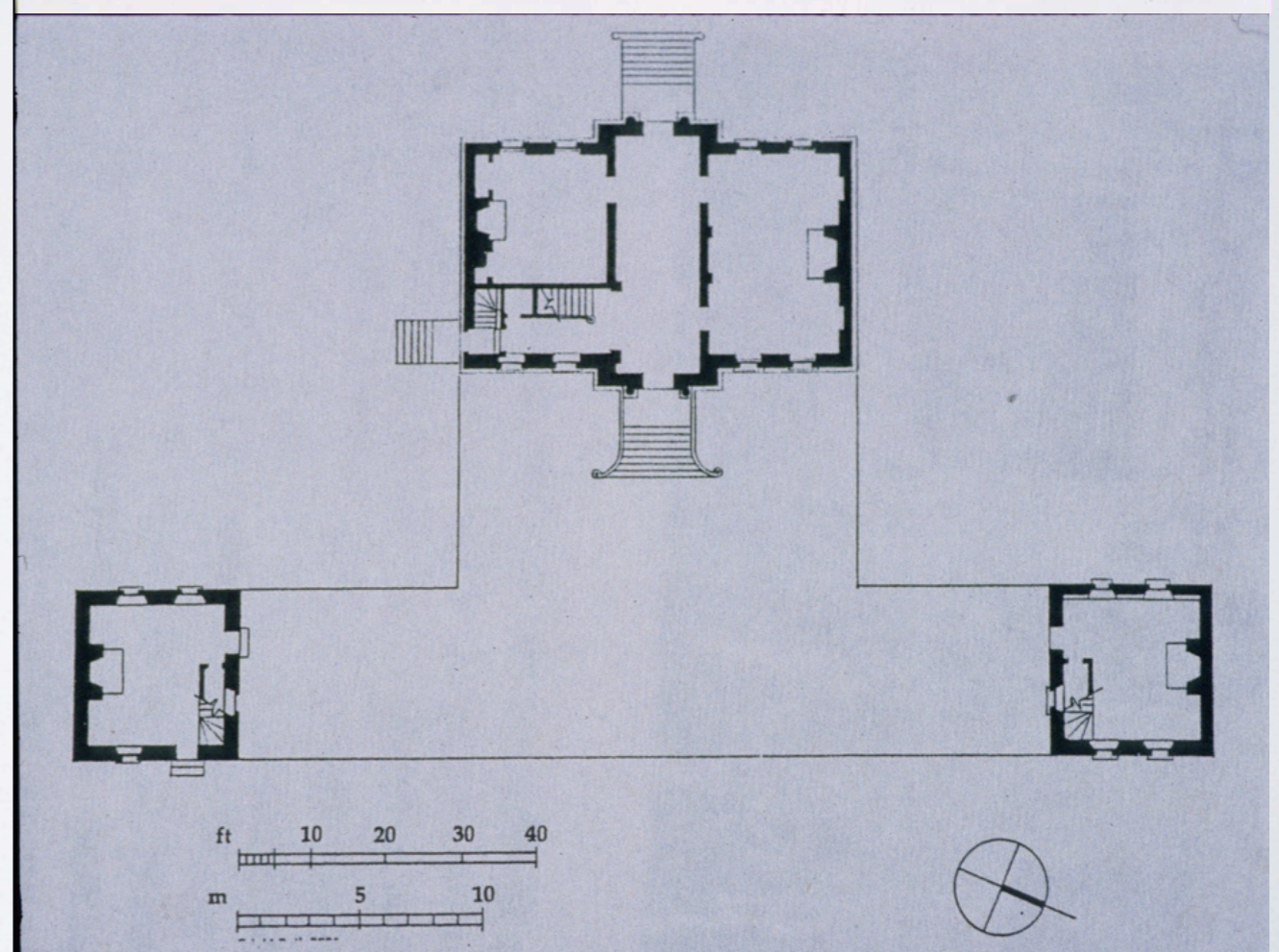
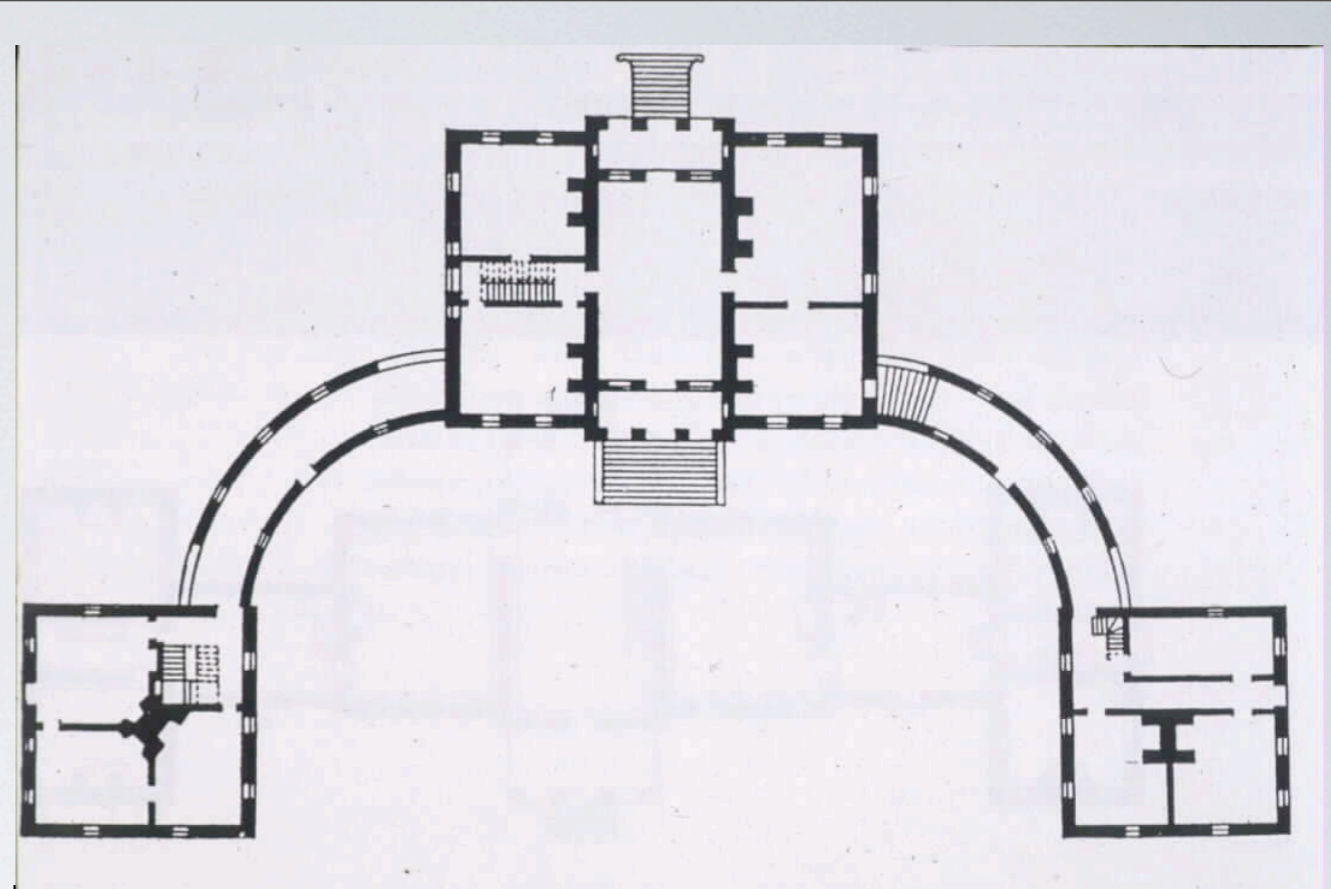


James Gibbs, A Book of Architecture, Plate 58, 1725





Processional Landscapes



Mt. Pleasant, 1761, Philadelphia, Pa



Hancock House
1737
Boston, Ma



Longfellow House
1759
Boston, Ma



Gunston Hall
Fairfax Co., Va.
1755
William Buckland



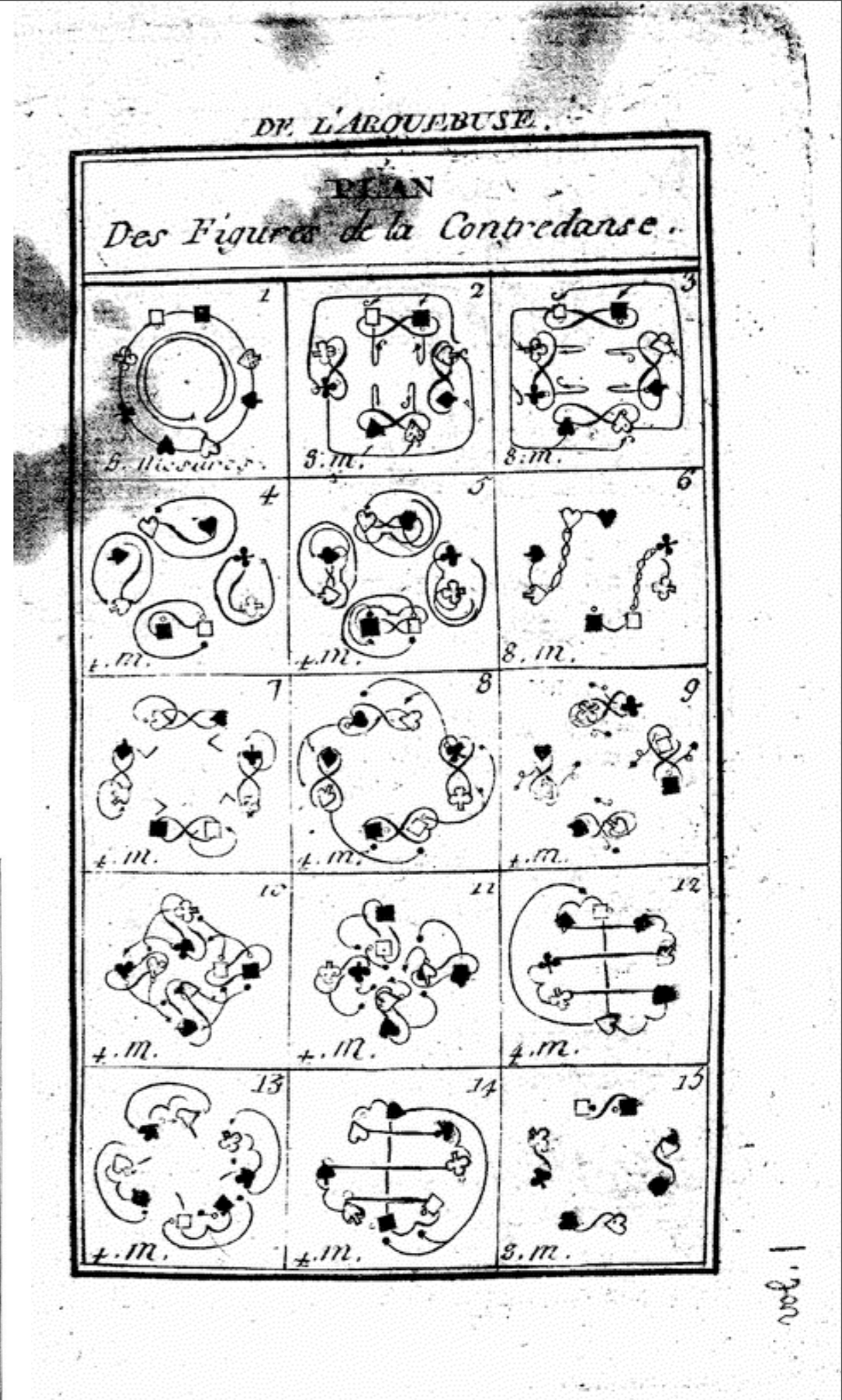
Palladian Dining Room
Chinese Dining Room

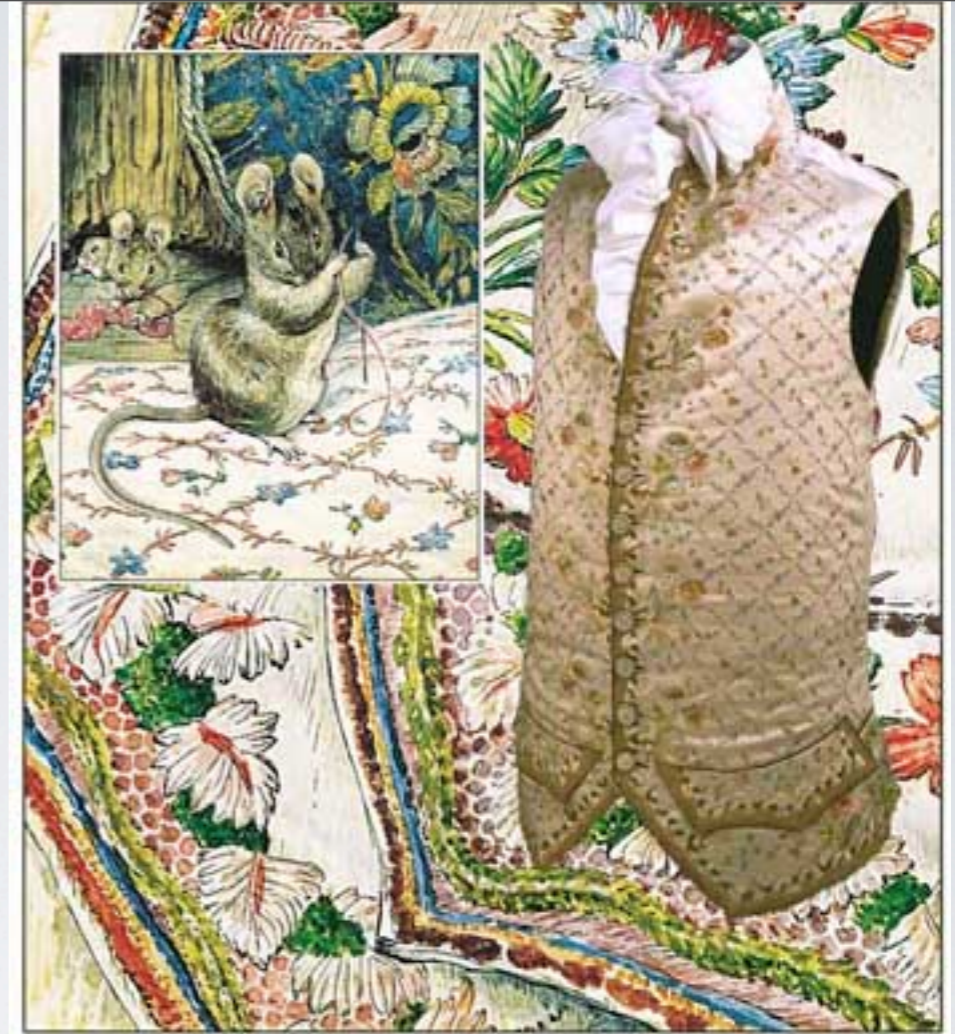


Gunston Hall



Carters Grove









Architectural Style as common language / identifier of social class

A photograph of a two-story red brick house with a dark grey roof. The house features two large brick chimneys on the roofline. The front facade has a central dark blue door with a white frame and a small transom window. There are four windows on the ground floor and five on the second floor, all with white frames. A person is sitting on a wooden bench in front of the house. The text "Style unites a mobile people of similar social and economic status" is overlaid in white on the upper part of the image.

Style unites a mobile people of similar social and economic status



**RIGHT:
STYLE UNITES PEOPLE OF
SIMILAR SOCIAL AND
ECONOMIC STATUS**

**LEFT:
FASHION DISTINGUISHES
AMONG PEOPLE OF
SIMILAR SOCIAL AND
ECONOMIC STATUS**

